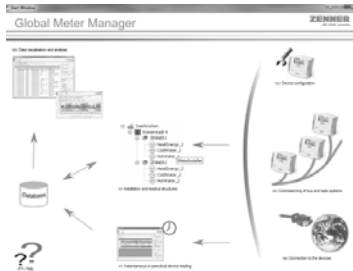


## M-Bus Network



### Features

- Only 2-core cable required
- Polarity independent connections
- Up to 250 devices per M-Bus segment

### Specification

*Software requirement (minimum);*

Windows XP SP2 with admin rights

.NET 2.0

100MB hard disk space

Processor of X86 family with 300mH clock speed of higher

256 MB RAM

*Hardware requirements;*

Max. cable per segment            1000m

Max. number of slaves                250

M-Bus baud rate                        2400

Cable resistance                        <73  $\Omega$  /km

Cable capacitance                       <300pF / 100m

For full technical documentation please contact Sontay.

### Product Codes

**MW-GMM**

M-Bus communication software\*

**MW-MASTER-32**

M-Bus master, 32 metering points

**MW-MASTER-250**

M-Bus master, 150 metering points

\* Single user PC licence. Other packages available on request

## Technical Overview

The MW-MD & MW-U range of Heat Meter Integrators, when ordered with the optional M-Bus output module and an M-Bus master, will allow up to 250 devices to be connected together on a network. Sontay M-Bus masters allow either 32 or 250 meters to be read per network.

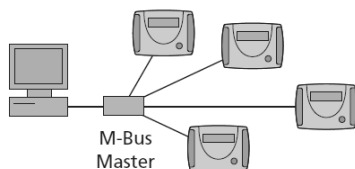
The M-Bus master module receives data from the meters, and using the MW-GMM software it is possible to read the meters and export information as a .CSV file, typically energy usage for billing purposes.

## Topologies

### Star

Each device is linked to a central master with an individual transmission line. The devices can transmit to the central master either sequentially or simultaneously.

*Disadvantage:* Increased requirement for cabling.

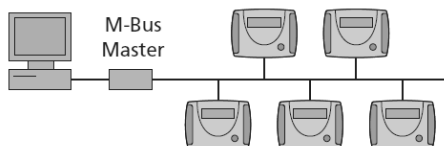


### Bus

The devices are connected together with a common transmission line, with the result that at any given time only one device can transmit data.

*Advantages:* Very cost-effective

No disruption if one of the devices fails



- A combination of star and bus
- NB – Ring topology is NOT supported.

**Note:** *Sontay recommends BUS topology only.*

M-Bus segments typically consist of:

- M-Bus 'slave' devices (for example, heat meters)
- An M-Bus 'master'/level convertor (A master unit - typically a PC with M-Bus software - polls the slaves for data, the level convertor changes M-Bus data levels to RS-232 for connection to a PC)
- M-Bus repeaters (if required)

**For full technical documentation please contact Sontay.**

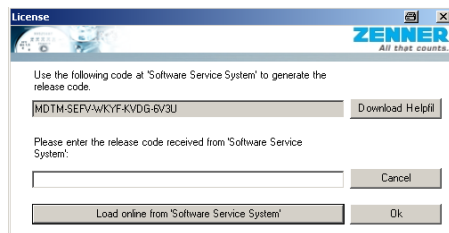
## MW-GMM Installation Guide

Download and install MW-GMM, by following the steps of the installation process.

The full setup file can be found on the Zenner webpage in the software section under Global Meter Manager.  
(<http://en.zenner.com/index.jsp?lang=en&show=service/software.html>)

Please make sure before installation, that the System requirements for MW-GMM are fulfilled, in order to allow a correct installation.

At the end of the installation process the license code window will show up displaying information that is needed to generate the licence key online:



Please do not close this window while generating your licence key!

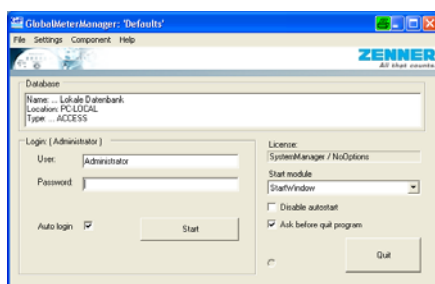
Contact Sontay Technical Support by either calling 01732 861518 or e-mailing [support@sontay.com](mailto:support@sontay.com) to generate your licence key.

Enter the release code and click ok.

Please check the "Ask before quit program" box to make sure that you do not close the program accidentally. Thus, when trying to close MW-GMM, an alert window will be shown before.

For each next start, you can choose which component window should show up directly after login. Choose the corresponding component from the drop down menu at "Start module". The advantage of the Start Module option is the fact that you save your time by directly, after logging in, going into the component you use the most. It is also possible to select "Start window" as a starting window of MW-GMM which is recommended especially for the MW-GMM user beginners.

Before starting to use the licensed Global Meter Manager for the first time, quit the installation process by pressing the "Quit" button or the right top cross to leave the software. After this, restart MW-GMM (for example by double-clicking the icon on the desktop).



The MW-GMM software is now ready to use, any further help that is required during the setup of the software you can access the Helpfile at any time.