

Ceiling Mounted Occupancy Detector



Features

- Compatible with a broad range of equipment
- Flush or surface mount options
- Small loads can be switched directly without the need for interposing relays

Specification

Occupancy Sensor	Passive Infra-Red Detector
Field of view	360°
Coverage	7 metres max.
Type	Class 2I
Supply Voltage	12 - 24Vac/Vdc
Switching Capacity	240Vac @ 6(2)A
Electrical Connections	+24V, 0V, Relay - Common, NO, NC
Dimensions	See Page 2
Temperature	-10 to +40C
Humidity	90%RH non-condensing
Material	Flame retardant ABS, polypropylene
Conformity	EMC, LVD, CE Marked
Country of Origin	UK

Product Codes

OC-PIRC-LV

Low voltage ceiling mounting occupancy detector,
flush mount

OC-PIRC-LV-S

Low voltage ceiling mounting occupancy detector,
surface mount

Technical Overview

The OC-PIRC-LV is a Passive Infra-Red detector for monitoring occupation through moving body heat. Detection of occupancy causes the internal SPDT relay to activate. The mains rated volt free contacts in the OC-PIRC-LV ensure compatibility with a vast array of equipment.

Installation

The OC-PIRC-LV should be sited so that the occupants of the room fall inside the detection pattern shown below and in accordance with the following guidelines.

- Avoid direct sunlight entering the sensor.
- Do not site within 1m of forced air heating or ventilation.
- Do not site within 1m of any lighting.
- Do not fix to a vibrating surface.

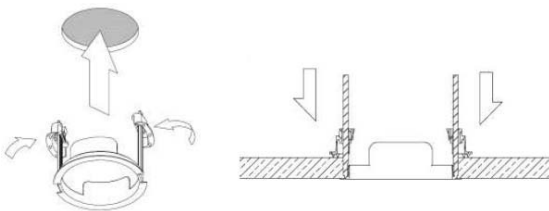
Fixing

Flush Mounting

Flush mounting is achieved using the plastic bracket and clips provided.

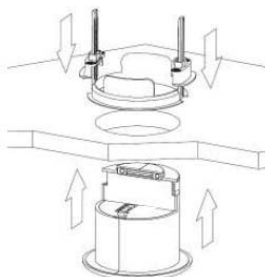
Ensure that the ceiling tile is of suitable material to support the weight of the unit and that there is sufficient clearance above the ceiling. No access is required to the ceiling void, other than for wiring.

a/



65mm dia. hole should be cut if mounted this way.

b/



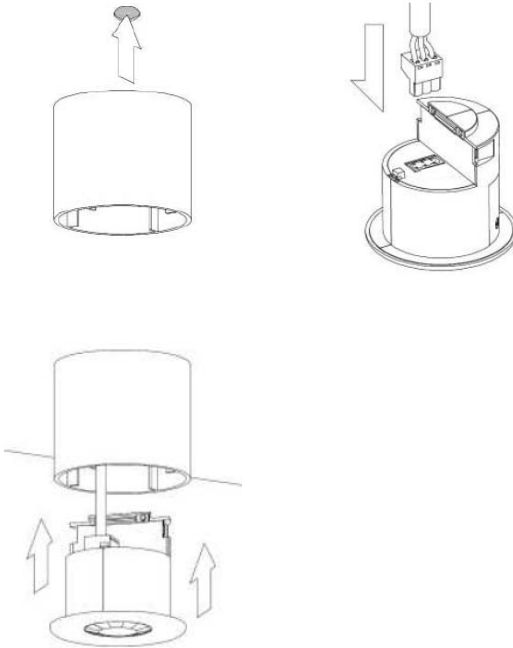
59mm dia hole should be cut if mounted this way.

Fixing (continued)

Surface Mounting

Surface mounting is effected using the optional surface back box. Side knockouts are provided for cable entry. Fixing lugs allow mounting to BESA boxes or metal boxes. Optional security screws can be fitted to prevent removal.

50 or 60mm fixing centres



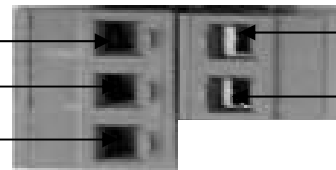
Connections

Output

Common
N/C
N/O

Supply

12/24Vac/dc
0V

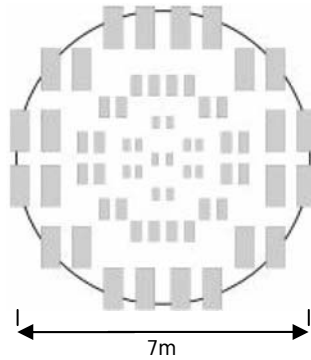


Setting Time Delay

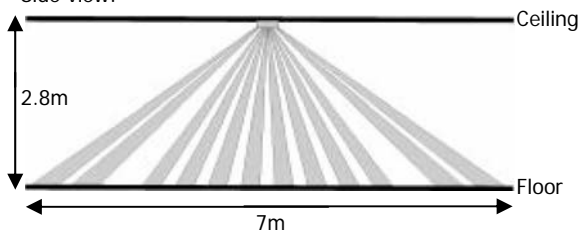
Timing is adjustable between 10s and 30min using the screwdriver slot labelled TIME.

Detector Patten

Top view:

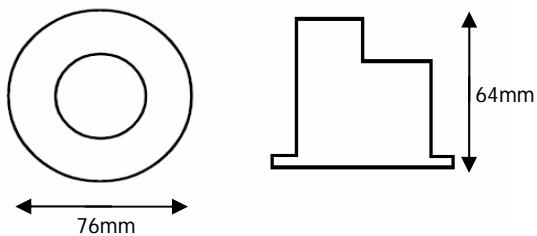


Side view:

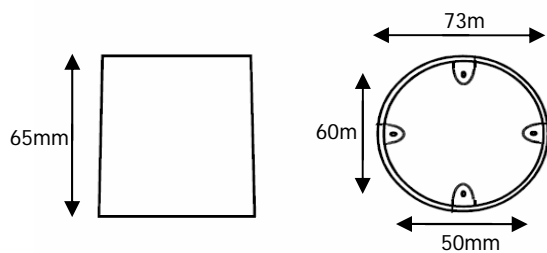


Dimensions

Main Housing:



Surface Back Box:



Flush Mounting Bracket:

