



Features & Benefits

- Gas and water measurements and multi-tariff management in only one instrument
- Easy variable scrolling by means of the front joystick
- Pulsed or Modbus output options
- Two digital outputs (alarms or/and pulses) or RS485 communication port

Technical Overview

The PM-EM24 DIN-rail mounted energy analyser is designed for active and reactive energy metering.

When using the optional RS-485 ModBus output it is possible to connect up to three additional pulse inputs from other metering equipment enabling all consumption data to be read from just one meter. PM-EM24 features eight user-selectable applications are available to allow fast setup, with lockable programme selector, and joystick control of up to 31 LCD display pages.

Standard meters are non-MID. For billing use, add annex -D option. Extra system information is required please contact Sontay Support.

Product Codes

PM-EM24-P Energy analyser with pulsed output

PM-EM24-M Energy analyser with Modbus output

Option (add to part code above)

-D Annex -D Certification

Accessory


PM-PMK Panel door mounting kit

Specification

Measurements:	
System	VLL, VLN, Admd max, var, VA, W, Wdmd, Wdmd max, VAdmd, VAdmd max, PF, Hz;
Single-phase	VLL, VLN, A, W, var, VA, PF, Admd, kWh, kvarh, Hour counter
Frequency	45 to 65 Hz
Display	3 lines (1 x 8 digit., 2 x 4 digit.)
Housing	Nylon PA66, self-extinguishing UL 94 V-0
Mounting	Din-rail
Output types:	
Pulse	Open collector
Modbus	RS485
RS 485:	
Address	Programmable, 1 to 247,
Baud-rate	Programmable, 4800, 9600 bit/s
Sampling rate	1600 samples /s @ 50Hz 1900 samples/s @ 60Hz
Display refresh time	750m/s
Ambient:	
Humidity	0 to 90% (non-condensing)
Temperature	-25 to +55°C
Protection:	IP50 (front)
Dimensions:	90 x 71 x 65mm
Country of origin	Italy

NOTE: Full operating instructions and user manual are supplied with the meter.

WEEE Directive:

 At the end of the products useful life please dispose as per the local regulations. Do not dispose of with normal household waste. Do not burn.



The product referred to in this data sheet meet the requirements of EU 2014/30/EU and 2014/35/EU

Overview

Characteristics

Measurements: System: VLL, VLN, Admd max, var, VA, W, Wdmd, Wdmd max, VAdmd, VAdmd max, PF, Hz;
 Single-phase: VLL, VLN, A, W, var, VA, PF, Admd, kWh, kvarh, Hour counter

The PM-EM24 DIN-rail mounted energy analyser is designed for active and reactive energy metering. When using the optional RS-485 Modbus output it is possible to connect up to 3 additional pulse inputs from other metering equipment enabling all consumption data to be read from just one meter.

PM-EM24 features 8 user-selectable applications are available to allow fast setup, with lockable programme selector, and joystick control of up to 31 LCD display pages.

Certified according to MID Directive, Annex "B" "Type examination" relevant to active electrical energy meters (see EU Directive 2004/22/EC, Annex MI-003)

Applications

- 3-Phase, 3-wire balanced & unbalanced load
- 3-Phase, 4-wire balanced & unbalanced load
- 2-Phase, 3-wire
- 1-Phase, 2-wire

Front Panel Description

1. Joystick

To program the configuration parameters and scroll the variables on the display.

2. LED

Red LED blinking proportional to the energy being measured.

3. Display

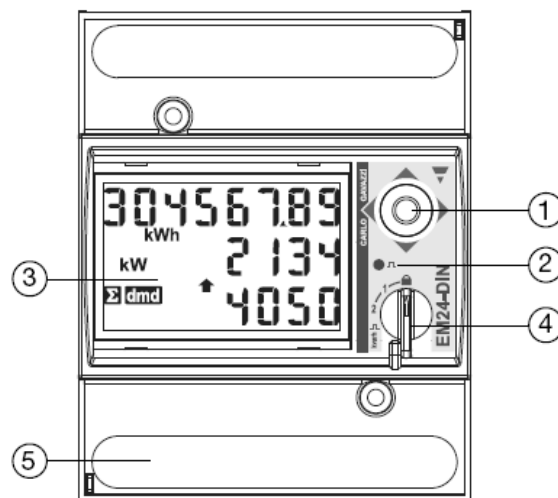
LCD-type with alphanumeric indications to:
 - display configuration parameters;
 - display all the measured variables.

4. Selector

To select the desired display pages and to lock the programming.

5. Connections

Screw terminal blocks for instrument wiring.



Whilst every effort has been made to ensure the accuracy of this specification, Sontay cannot accept responsibility for damage, injury, loss or expense from errors or omissions. In the interest of technical improvement, this specification may be altered without notice.

Tel: +44 (0)1732 861200 - E-mail: sales@sontay.com - Web: www.sontay.com

© 2017 Sontay Limited. All rights reserved