



Technical Overview

The TT-DFP allows for duct insertion depth adjustment, it is useful if the duct size is smaller than the probe or localisation of the sensing element is required.

It is suitable for use with the TT-554, TT-322 or the TT-342 range of sensors

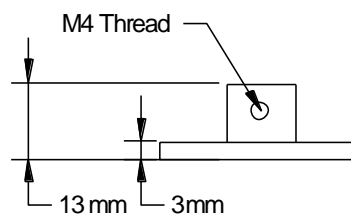
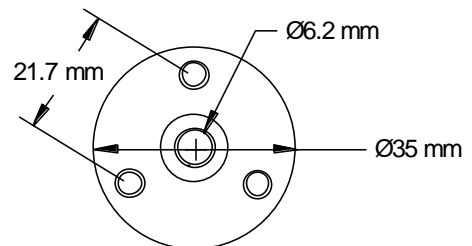
Fix to the duct using screws supplied, insert the sensor into the flange to the required depth and tighten the grub screw.

Product Codes

TT-DFP Duct flange plate

Specification

Material	Aluminium
Ambient range	-10 to 90°C
Country of origin	UK



WEEE Directive:



At the end of the products useful life please dispose as per the local regulations.
 Do not dispose of with normal household waste.
 Do not burn.

Whilst every effort has been made to ensure the accuracy of this specification, Sontay cannot accept responsibility for damage, injury, loss or expense from errors or omissions. In the interest of technical improvement, this specification may be altered without notice.